

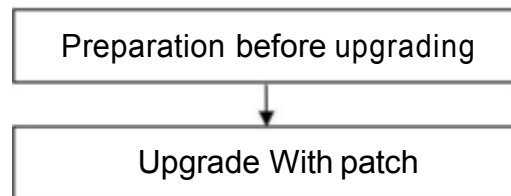
Upgrade Guidance for HD Cameras

This patch is only suitable for HD cameras FI9821W V2, FI9818W V2, FI9831W, FI9826W, FI9821P, FI9831P, FI9826P, FI9805W, FI9804W, FI9804P, FI9805E, FI9805P, FI9805EP, FI9828P, FI9828W.

Note:

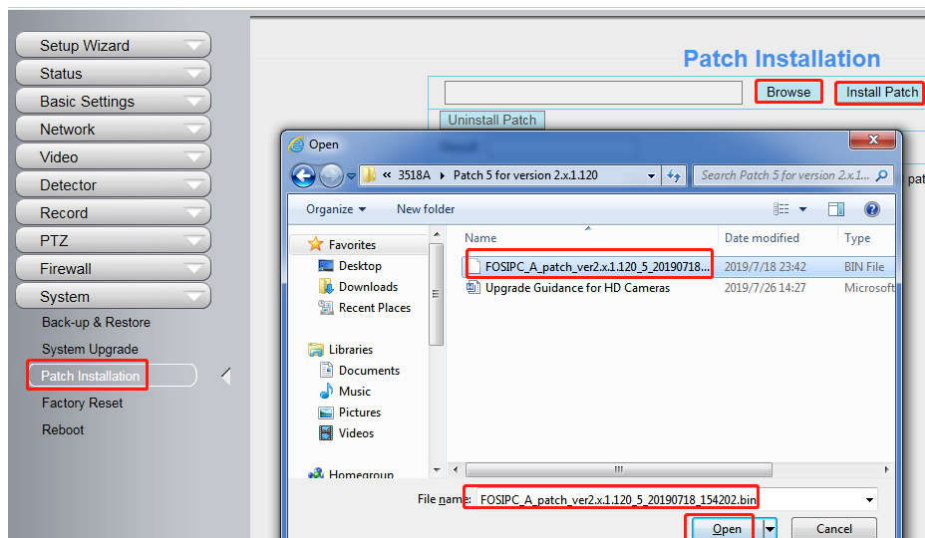
System firmware 1.4.1.10 and application firmware 2.x.1.120 can upgrade with this patch.

If your cameras has other firmware version, please upgrade to the correct firmware version first.



Preparation before upgrading:

1. **Please restart your camera before the upgrading;**
1. **Connect camera to router with an Ethernet cable before upgrading;**
2. **DO NOT upgrade firmware via wireless;**
3. **DO NOT upgrade firmware over internet, just finish it in LAN;**
4. **Keep power on during the upgrading;**
5. **Unplug the SD card before upgrading;**
6. **Logging your camera as administrator first, upgrade firmware on web page.**



Step: Please log in the camera and go to Settings→System→Patch Installation to upgrade with this patch.

--- By Foscam Technical Support Team